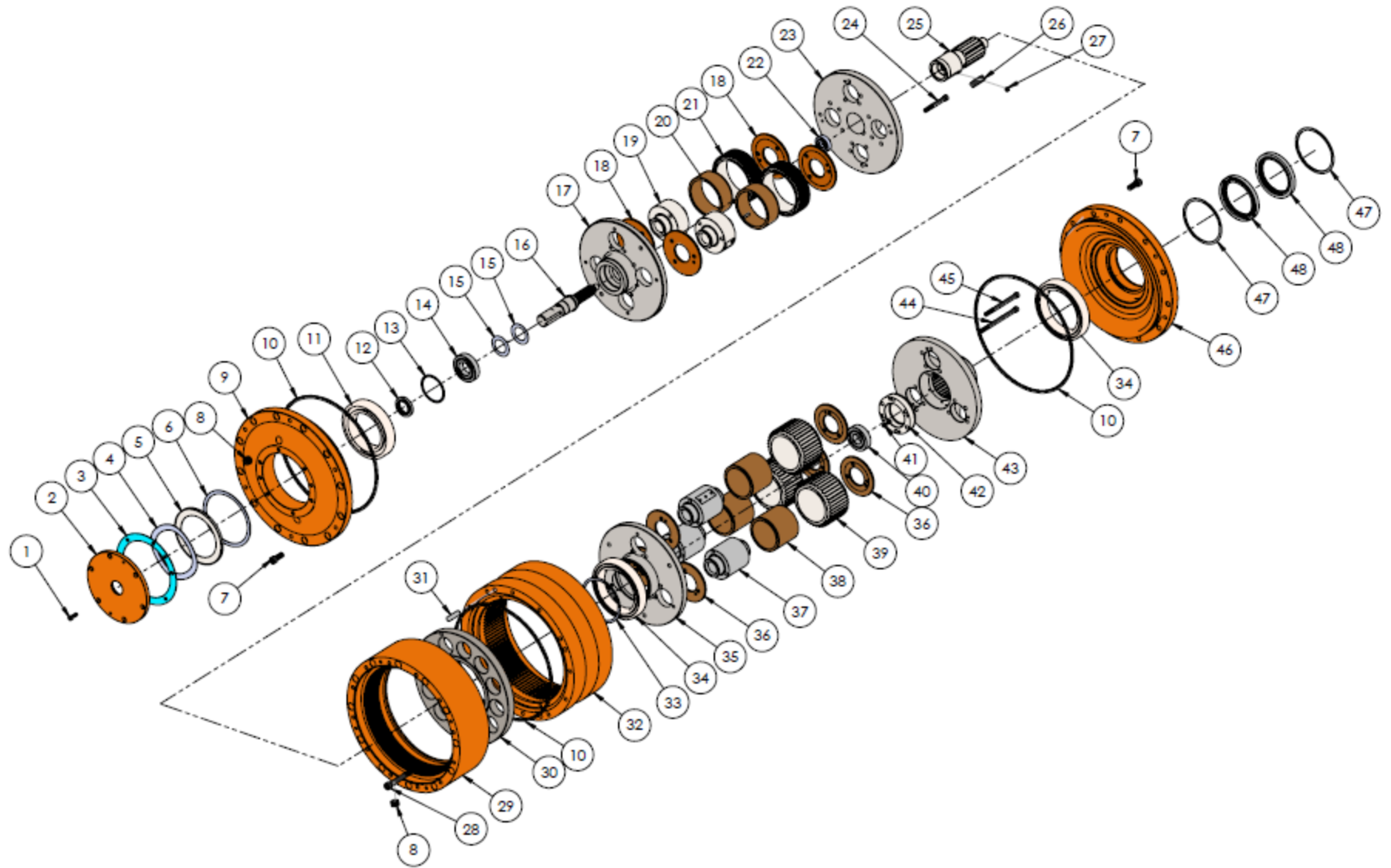
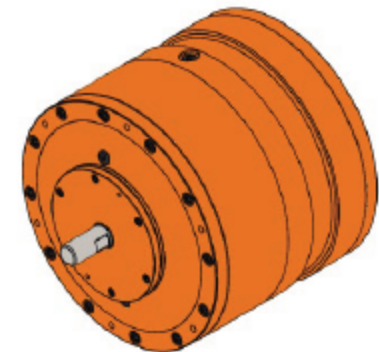


Rev Tech LC - Aftermarket Parts for P-90 Gearbox



Item#	Part #	Description	Qty	Item#	Part #	Description	Qty
1	320300	SHCS 5/16" -18 x 7/8"	6	23	322106	1st Stage Inner Plate	1
2	320100	Seal Cap	1	24	322200	SHCS 3/8" - 16 x 3-1/4"	6
3	320200	Gasket	1	25	322102	2nd Stage Pinion (Insertable)	1
4	150901	Wavy Spring Washer	1	26	322103	Key	1
5	320902	Wavy Spring Retainer	1	27	322104	Set Screw	1
6	320903	Wavy Spring Spacer	1	28	322504	SHCS 1/2" - 13 x 4"	12
7	320800	SHCS 1/2" - 13 x 1 1/4"	24	29	322501	1st Stage Ring Gear Case	1
8	320500	Oil Plug	3	30	322503	Case Center Bearing Support	1
9	320700	Outside Cover	1	31	322504	Dowel Pin	1
10	320800	O'Ring 456 H70	2	32	322502	2nd Stage Ring Gear Case	1
11	321000	Bearing 6022M	1	32-A	322500	Ring Gear Case Assembly	1
12	150400	Oil Seal	1	33	152700	Spiral Lock Retainer RR-500	1
13	321200	Spiral Lock Retainer RR - 314	1	34	151000	Bearing 5" x 7"	2
14	321100	Bearing 6208	1	35	322800	2nd Stage Outer Plate	1
15	151101	Disc Spring	2	36	322900	2nd Stage Thrust Washer	6
16-A	322300	1st Stage Pinion P-98	1	37	323000	2nd Stage Axle	3
16-B	322301	1st Stage Pinion P-49	1	38	323200	2nd Stage Bronze Bearing	3
17	321302	1st Stage Outer Plate	1	39	323300	2nd Stage Planet Gear	3
18-A	321402	1st Stage Thrust Washer P-98	4	40	323600	Bearing 7306	1
18-B	322900	1st Stage Thrust Washer P-49	4	41	323502	SHCS 1/4-20 x 1-1/8"	6
19-A	321500	1st Stage Axle P-98	2	42	323501	Spline Plug	1
19-B	321501	1st Stage Axle P-49	2	43	323500	2nd Stage Cover w/Spline	1
20-A	321700	1st Stage Bronze Bearing P-98	2	45	323100	SHCS 3/8" - 16 x 5"	9
20-B	321701	1st Stage Bronze Bearing P-49	2	46	323800	Inside Cover	1
21-A	321800	1st Stage Planet Gear P-98	2	47	324100	Spiral Lock Retainer RR-525	2
21-B	321801	1st Stage Planet Gear P-49	2	48	323900	Oil Seal	2
22	322401	Bearing 6303	1				



* Rev Tech LC is an independent centrifuge gearbox part supplier for various OEM companies and is not affiliated with these OEM companies.